



**MANUFACTURERS
OF RESTROOM CUBICLES**



- Plot Number-P10/J-3, Adore Business City, Sector 72-73, Faridabad, Haryana, 121004
- 91-987-373-5716
- 91-987-373-5713
- 91-965-438-7783

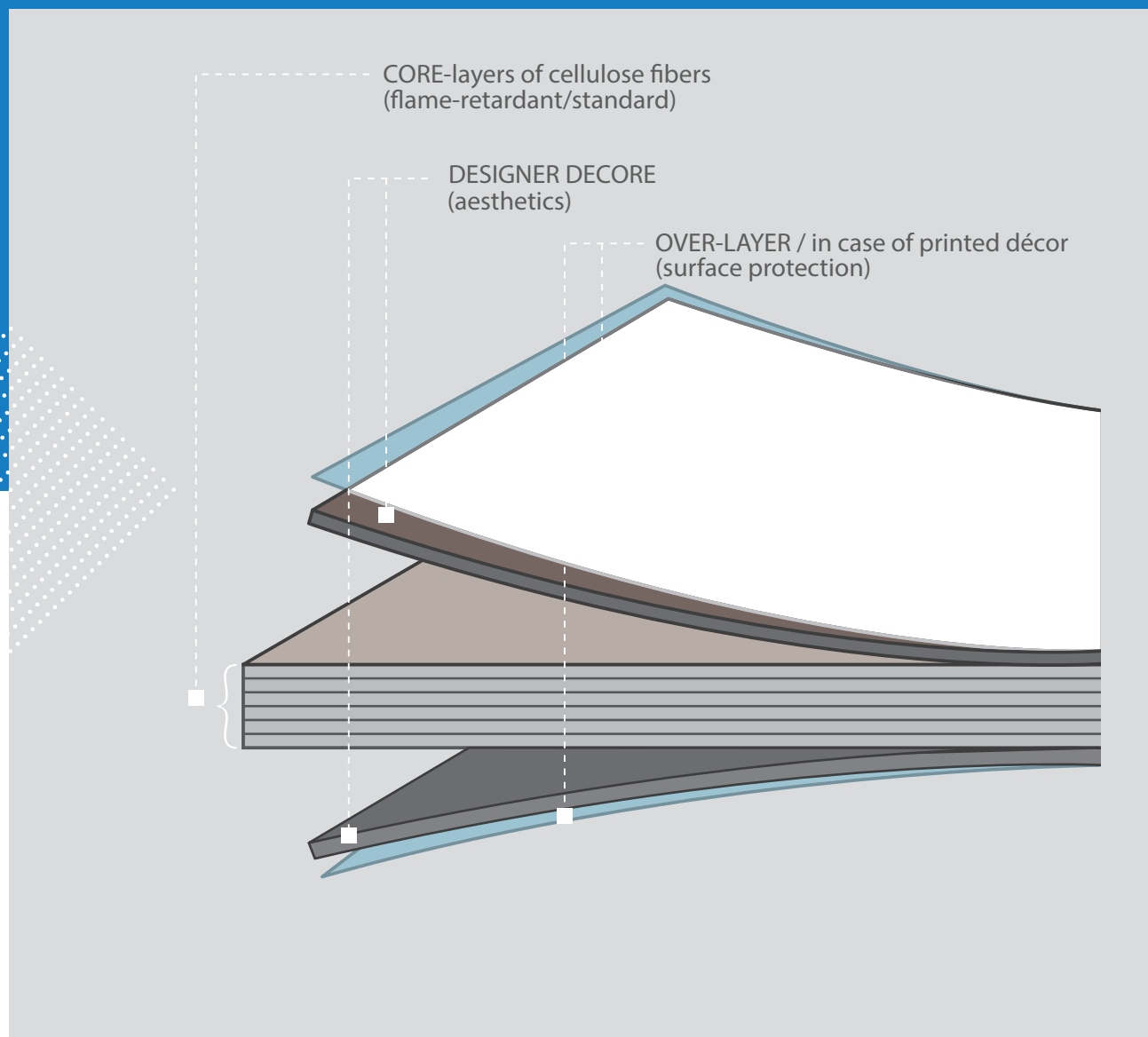


www.meghasystems.com
www.toiletcubiclesindia.in

Material Composition & Technical Specifications

Cubiloo offer superior-quality material, ideal for a plethora of applications. Constructed through multiple layers of cellulose reinforced with thermosetting resins and then brought together under extreme pressure. The result is an incredibly strong, reliable, and waterproof material with a density of 1350 kg m³. The laminates come with eye-catching colours and designs on both sides, and they are extra tough due to the melamine-based resins used.

The core layers are firmly bonded with highly effective phenolic-based resins. During the precise high-pressure process, heat (120 °C) and specific pressure (5 MPa) are carefully and simultaneously applied to ensure the excellent running of the thermosetting resins. This guarantees that the material has a consistent, non-porous structure and provides a smooth surface finish. Our boards are produced according to the EN438-152048 Standard, ensuring top class superiority and dependability.



Technical Data Sheet-Compacts

Sl.No	Properties	Unit	Specifications (BS EN 438-4)	Stylam Typical Values
1	Thickness	For 12 mm For 18 mm	12±0.6 18±0.7	12±0.6 18±0.7
2	Flatness	Mm/m, max. deviation	3.0	3.0 max
3	Resistance to surface wear, wear value.	Rev. Min.	350	370
4	Resistance to impact by large diameter ball	Drop height, min., t≥6mm	1800	2000
5	Resistance to scratching	Rating (min) Smooth finishes Textured finishes	2 3	3 3
6	Resistance to dry heat at 180 C ⁰ a. Gloss b. Other finishes	Grade, Min. Grade, Min.	3 4	4 5
7	Resistance to immersion in boiling water a) Mass increase b) Thickness increase c) Appearance (texture finishes)	t≥12mm %, Max. %, Max. Grade, Min.	2 2 3	0.8 1.0 4
8	Dimensional stability at elevated temperature (t≥12mm)	(L)%, Max (T)%, Max	0.3 0.6	0.2 0.4
9	Resistance to staining: a. Groups 1 & 2 b. Group 3	Rating (min) Grade, Min. Grade, Min.	5 4	5 5
10	Resistance to cigarette burns	Grade, Min.	3	4
11	Resistance to crazing	Grade, Min.	4	5
12	Resistance to steam/water vapour (texture finishes)	Grade, Min.	4	5
13	Light fastness (xenon arc)	Grey scale rating	4-5	4-5
14	Flexural modulus	Stress Mpa (min)	9000	10000
15	Flexural strength	Stress Mpa (min)	80	90



Construction Overview

Doors: The Cubiloo Compact Panel Door with chamfered edges offers a powerful amalgamation of strength and ease for an effortless installation. Equipped with 3 or more gravity hinges or spring-loaded but things made of either stainless steel or nylon, plus a convenient coat hook, and a doorknob. These doors are perfectly designed to simplify your life. These doors also feature a thumb turn lock and door knob for privacy and safety

Pilasters: Our resilient and dependable pilasters are crafted from tough 12 mm or 18 mm HPL compact panels. These robust pilasters provide unbeatable support for your restroom doors and dividers. You can mount them on the top rail, rest them on the floor using legs or elegantly box them up, whichever option you choose will appear stunning.

Intermediate Partition

Dividers: Our top-notch dividers are created from the strongest 12 mm or 18 mm HPL compact panels. These dividers are unbreakable, offering long-term reliability and strength.

Necessary Hardware



Legs: The new legs of the cubicles are a fantastic way to ensure stability in floor-mounted models. With adjustable heights ranging from 55-150mm, they offer complete customization to fit your needs perfectly.

Hinges: The premium spring-loaded butt and gravity hinges offer an effortless motion to open or close doors, making them the ideal solution for any cubicle.

Box-up Fixtures: Box-up fixtures are defined by their width and are known as "pilasters." Unlike legs, the height of box-up fixtures cannot be altered.

Top Rail: The top rail holds the pilasters in any restroom cubicle cluster.

U Channel: Vertically attaching an HPL compact panel to a wall or another compact panel is easy using the U-Channel system.

Door Stopper Channel: The door stopper channel/H channel is attached vertically to the mid panel, and it acts as a door stopper.

F Channel: F-Channel joins a pilaster to plaster at the end of any cluster with the divider.

Accessories

Coat Hook: An inventive, cubicle-mounted clothing hanger is mounted on the cubicle door to store items like jackets and portable bags conveniently.

Occupancy Indicator: An occupancy indicator serves as a signal to show whether a designated space is currently occupied.

Doorknob: A doorknob serves as an easy to hold handle to open the door from inside or outside.



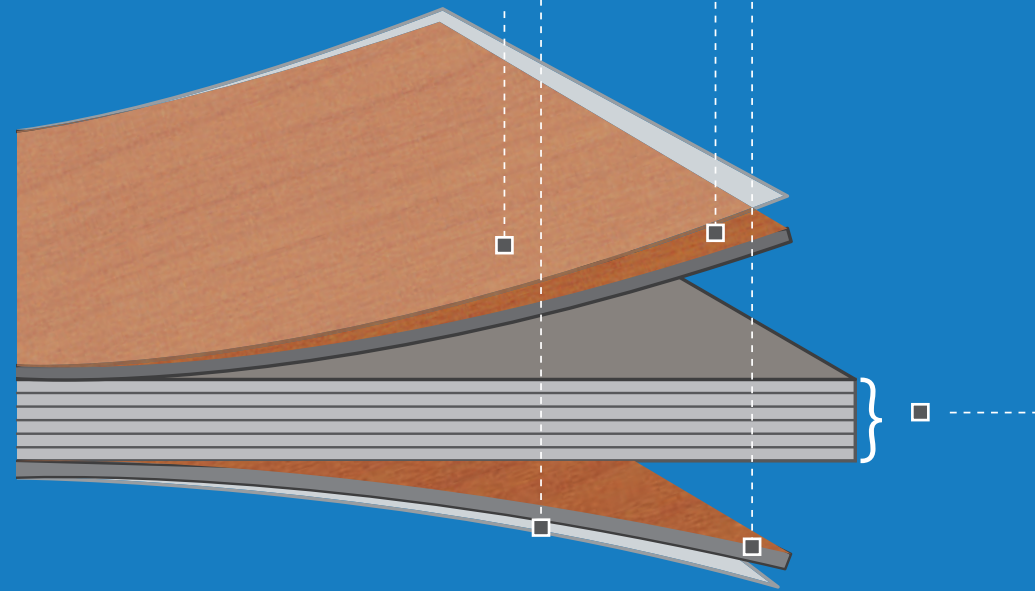
The Construct

Printed Design Compact Laminate

Black core craft paper (treated with melamine resin)

Printed design paper (treated with melamine resin)

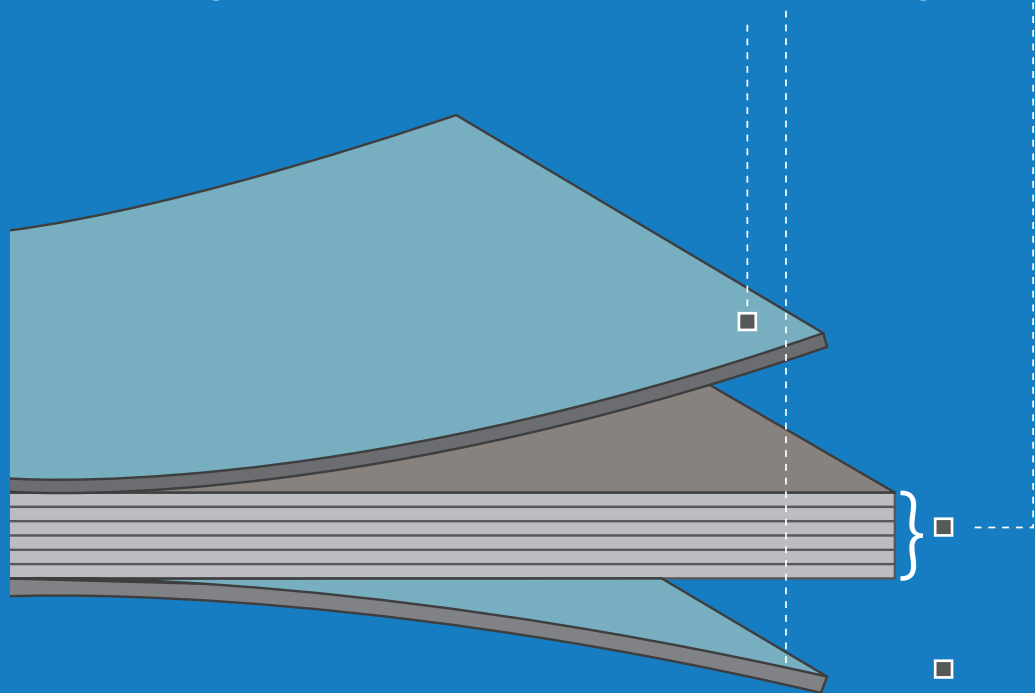
Over-layer paper for print décor
(treated with melamine resin)



Solid Compact Laminate

Black core craft paper (treated with melamine resin)

Solid design paper (treated with melamine resin)

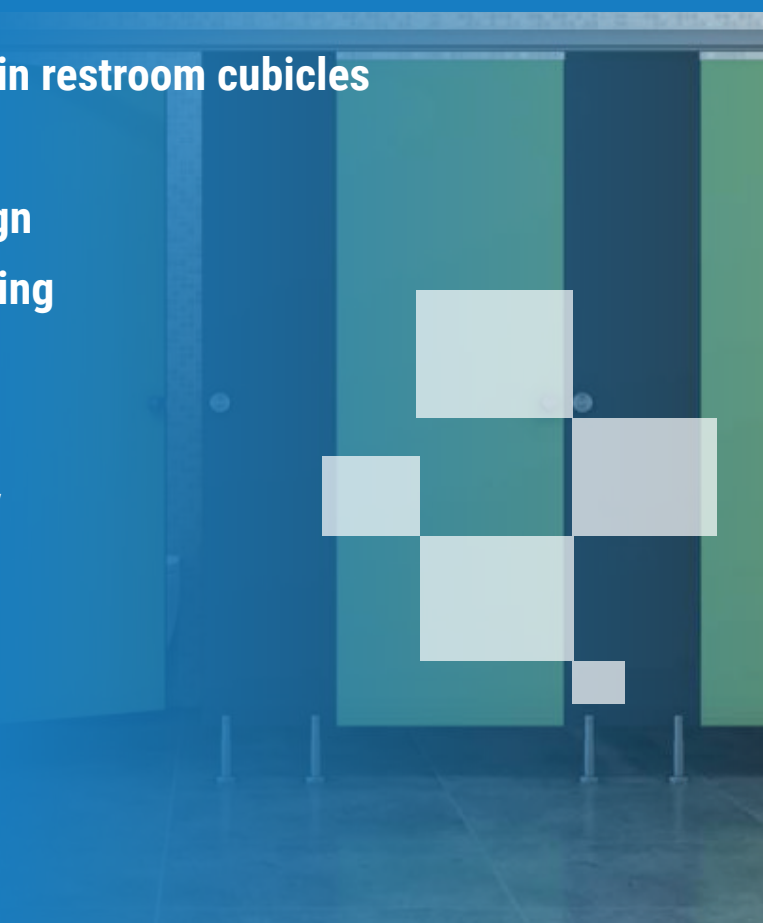
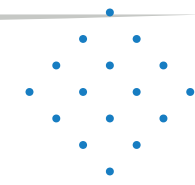


Compact Laminates with ANTI-BACTERIAL & ANTI-FUNGIE properties

- Retards 99.9% of fungal and bacterial growth on contact with the laminate.
- Meets the standards of ASTM G21-09 and ISO 22196-2007, which is based on JIS Z 2801.
- Backed by Green Guard Certification, and now with Anti-Bacterial & Anti-Fungai protection, it will improve indoor air quality by leaps and bounds

WHY CUBILOO

- **More than 8 years of experience in restroom cubicles**
- **One-stop service**
- **Product innovation with top design**
- **Top-quality material and processing**
- **Extensive product range**
- **Professional installation on site**
- **Prompt and on-schedule delivery**
- **Affordable and smart solutions**
- **Quick quotation processing**



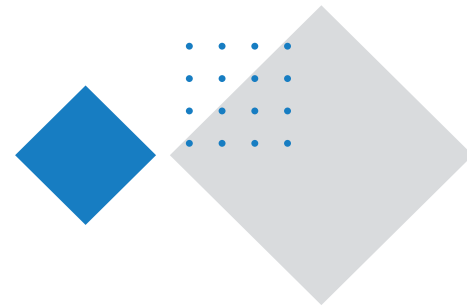
Neo

Introducing NEO series, the modular cubicles that offer the perfect blend of functionality and aesthetics. Crafted with precision, NEO is designed to cater to modern workspace requirements. It features robust construction using high-quality materials to guarantee durability and endurance. This robust arrangement features adjustable legs of nylon PA-6 anchored to the floor for optimum stability. The base of the leg is anchored to the floor with nylon plugs, ensuring a secure fit. The powder-coated aluminium top rail (grade 6063-T% alloy) maintains the alignment of all pilasters, ensuring a sleek, uniform look.

The intermediate panels, or partitions, are fixed to the rear wall and mid-pilaster through aluminium U-channels, providing sturdy support. Each door is mounted on a mid/end pilaster with 3 hinges while maintaining a floor clearance of 150 mm.

This arrangement can be put up with ease in multiple places, like:

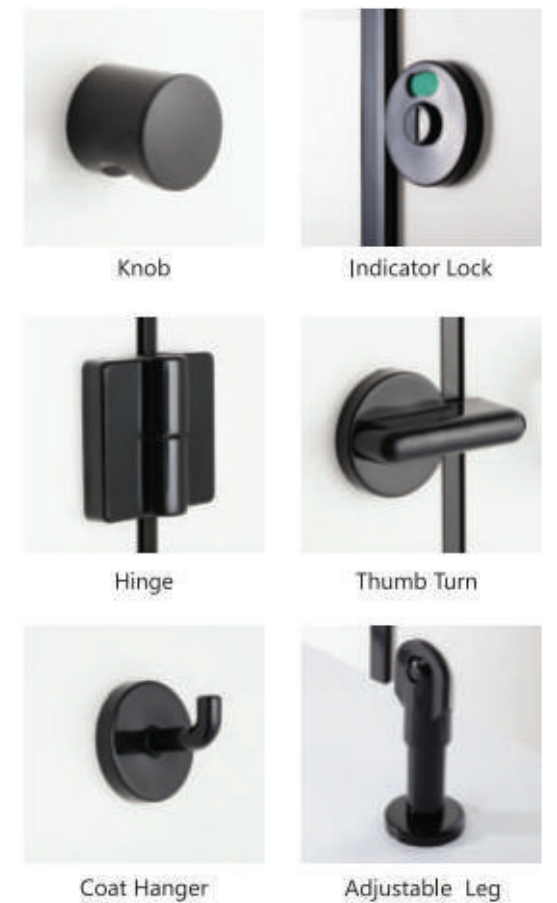
- Shopping malls / commercial complexes
- Hotels/restaurants
- Hospitals/clinics
- Stadium/sports clubs/gym
- Clubhouses
- Schools/collages/universities



Dimensions

Special Features

- Adjustable Nylon Polyamide Grade 6 legs
- Powder-coated aluminium top rail configuration for improved stability, economy, and aesthetics
- Nylon accessories (coat hook, hinges, lock set indicator, adjustable foot, etc.)
- Nylon accessories are available in three colour variants: White/Grey/Black



Maxi

This aesthetically pleasing and sturdy cubicle boasts an adjustable foot composed of Grade 304 stainless steel, securely fastened to the floor with a nylon plug and stainless-steel screws. This foot offers a generous clearance of 150 mm for optimal accessibility for users. The divider panels are affixed to the wall and central panel using robust aluminium U channels and stainless steel screw inserts. The top of the panels is fixed with an anodized aluminium top rail in a sleek stainless steel colour, complete with noise-absorbing tape to minimise sound transmission. All fittings, including hinges, coat hooks, adjustable feet, and locks with latch indicators, are made from high-quality stainless steel, guaranteeing longevity and durability.

Dimensions

Standard Dimensions	Regular (mm)	Specially Abled (mm)
Width of the cubicle	1000	1500
Height of entire cubicle	1995	1995
Depth of the cubicle	1500	1750
Height of the door	1785	1785
Width of the door	600	900
Ground clearance	150	150
Height of the door	1815	1815

Special Features

- The Maxi model is fitted with adjustable stainless-steel foot (grade 316)
- All aluminium profiles including u channel ,Door stopper channel,F channel & Top Rail comes in Natural anodised finish.
- Maxi model is provided with an adjustable foot with different material options, stainless steel grade 304 or 316.
- The Maxi model is provided with stainless steel gravity hinges and doorknobs.
- It has stainless steel adjustable foot.



Indicator Lock



Thumb Turn



SS Knob



Coat Hanger Cum stopper



Ss Leg



SS Spring Loaded Hinge



Maxi Pro

The Maxi PRO series cubicle structure is designed to provide optimal privacy and comfort in any restroom. With adjustable aluminium shoe box anchored to the floor and capable of accommodating mid/end pilasters, this structure is sturdy and versatile. The Aluminium shoe box are anchored to the floor with nylon plugs and SS screws, ensuring maximum stability. The extruded anodized aluminium top rail is fixed to maintain the alignment of all pilasters, ensuring a sleek and uniform appearance. Through the use of aluminium U-channels, intermediate panels (partitions) are linked to the mid-pilaster and back wall to create a solid and strong framework.

Each door is mounted on a mid/end pilaster with three hinges and maintains a floor clearance of 100 mm. The door features a coat hook and door knob for added convenience. One privacy thumb-turn and one door stopper channel are installed in the middle/end pilaster at the unhindered end of the door. The door opening can be set from the inside or outside and fixed on the left or right side, providing maximum flexibility in any space. Trust the Maxi PRO series cubicle structure to provide the privacy and comfort your restroom users deserve.

Dimensions

Standard Dimensions	Regular (mm)	Specially Abled (mm)
Height of entire cubicle	2025	2055
Depth of the cubicle	1550	1550
Pilaster height	1830	1840
Pilaster width	150/300	150/300
Height of the door	1815	1815
Width of the door	600	900
Ground clearance	100	100
HPL thickness	12	12

Special Features

- Aluminium shoe box (Powder coated)
- Natural anodizing of aluminium Top rail arrangement for better stability and economy
- SS accessories (adjustable foot, coat hook, lock set/latch indicator, hinges, etc.)



Duro

This cubicle is well supported by an adjustable foot manufactured from grade 316 stainless steel to ensure the long-lasting durability of the product. Its base is held firmly secured to the floor via nylon plugs and stainless-steel screws, while U channels made from stainless steel are attached to its divider and mid panels for greater added stability and support. With a large clearance width of 150 mm, this system allows for generous space navigability and free mobility.

Dimensions

Standard Dimensions	Regular (mm)	Specially Abled (mm)
Width of the cubicle	1000	1500
Height of entire cubicle	1900	1900
Depth of the cubicle	1500	1750
Height of the door	1830	1830
Width of the door	600	900
Ground clearance	150	150

HARDWARE & ACCESSORIES



Top Rail
SS



U-Channel
SS



F-Channel
SS



Door Stopper
SS



Thumb Turn
SS



Occupancy Indicator
SS



Spring Loaded Butt Hinges
SS



Adjustable Leg
SS



Door Knob
SS



Coat Hook
SS



Noise Deafening Rubber

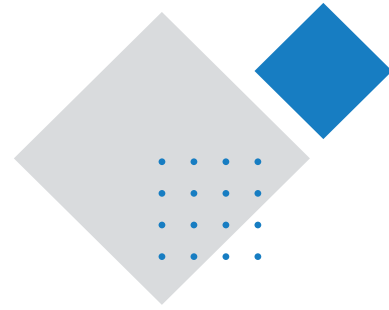


Screws & Wall Plug



Duro Pro

This cubicle is well supported by an adjustable foot manufactured from grade 316 stainless steel to ensure the long-lasting durability of the product. Its base is held firmly secured to the floor via nylon plugs and stainless-steel screws, while U channels made from stainless steel are attached to its divider and mid panels for greater added stability and support. With a large clearance width of 150 mm, this system allows for generous space navigability and free mobility. A stainless-steel top pipe with a panel holder and wall bracket ensures a secure panel fit, adding to the system's overall stability. This ensures a comfortable and peaceful restroom experience for all.



Dimensions

Standard Dimensions	Regular (mm)	Specially Abled (mm)
Width of the cubicle	1000	1500
Height of entire cubicle	2000	2000
Depth of the cubicle	1500	1500
Height of the door	1830	1830
Width of the door	600	900
Ground clearance	150	150

Special Features

- The top rail and surrounding structure of the Duro Pro model are made of stainless steel (grade 304) in a round configuration.
- When required, the height of Duro Pro model restroom cubicles can be increased up to 2100 mm
- Stainless steel doorknob, stainless steel gravity hinges, stainless steel adjustable foot, privacy/thumb turn with indicator, stainless steel coat hook come door stopper



Luron

Introducing Luron's SS Shoe Box, a high-quality shoe box made with Grade 316 stainless steel. This shoe box is designed to be anchored to the floor, allowing mid/end pilasters to be fixed. The pilaster is supported by an L-bracket floor anchor bolt concealed by the 100 mm high SS shoe box. One of the key features of this shoe box is the 100 mm of floor clearance it provides, ensuring ample space for your shoes. The top rail, made with SS Grade 304 stainless steel, is fixed to maintain the alignment of all pilasters, which is mandatory in the 12 mm model

By using SS U-channels to secure intermediate panels or partitions to the mid-pilaster and rear walls, stability and longevity are guaranteed. Each door is attached to a mid/end pilaster with three hinges and has one coat hook and one door knob. mid-pilaster thumb turn lock through stainless steel U-channels, assuring stability and longevity. One of the unique features of this shoe box is the ability to set the door opening from either the inside or outside and fix it on the left or right side, providing you with the flexibility to customise your shoe box as per your requirements. In addition, the Luron cubicles come with privacy indicators/ knobs and coat hooks. Get on Luron's SS Shoe Box and experience the perfect blend of functionality and style.

Dimensions

Standard Dimensions	Regular (mm)	Specially Abled (mm)
Height of entire cubicle	1915	1915
Depth of the cubicle	1550	1550
Height of the Pilaster	1830	1860
Width of the Pilaster	150/300	150/300
Height of the door	1760	1760
Width of the door	600	900
Ground clearance	100	100
HPL thickness	12	12

Special Features

- The SS Shoe Box Up layout at the bottom improves the lavatory area's aesthetic appeal.
- The overall aesthetic of the lavatory area is improved by the SS top rail arrangement, which provides greater stability and is strengthened at the bottom.
- SS accessories
- When required, the height of luron model restroom cubicles can be increased to 2100 mm.
- On special demand, adjustable foot can be provided in SS grade-316



Cubi Doorz

The Door model is the perfect solution for creating private workspaces in any office or commercial environment. Made with high-quality materials and thoughtful design, this cubicle boasts a range of features that make it stand out from the competition. The aluminium D-shaped poles are securely fixed into the wall on both sides with SS screws and plugs, ensuring a stable and sturdy installation. The doors are mounted on D-shaped poles with 3 hinges, providing a smooth and effortless opening and closing experience every time.

The rubber sponge/lining affixed to the poles reduces noise to a minimum, making door model the ideal choice for quiet workspaces. Additionally, the door opening can only be set from the inside and fixed on either the left or right side, providing maximum flexibility in any setting. For added privacy, the door model features a privacy indicator/knob, allowing users to signal when the space is occupied. And with the inclusion of a coat hook, keeping personal items organised and within reach has never been easier. Choose the door model for an elevated office experience that prioritises privacy, functionality, and design.

Dimensions

Standard Dimensions	Regular (mm)	Specially Abled (mm)
Height of entire door model	1830	The dimensions will be as per the intermediate brick wall setup.
Height of the door	1830	
Width of the door	700/900	
Ground clearance	150	150
HPL thickness	12	12

Special Features

- Doors made up of 12 mm thick compact board
- Hardware and accessories are available in nylon and aluminium.
- Slim and strong, highly durable system
- Wrap around the matching pilaster.
- Faster installation and maintenance-friendly
- Nylon accessories are available in three colour variants: White/Grey/Black
- On special demand, height can be increased to 2100mm.
- DPole available in Aluminium and Nylon
- Hardware can be used SS or Nylon



Kiddiez

Introducing NEO series, the modular cubicles that offer the perfect blend of functionality and aesthetics. Crafted with precision, NEO is designed to cater to modern workspace requirements. It features robust construction using high-quality materials to guarantee durability and endurance. This robust arrangement features adjustable legs of nylon PA-6 anchored to the floor for optimum stability. The base of the leg is anchored to the floor with nylon plugs, ensuring a secure fit. The powder-coated aluminium top rail (grade 6063-T% alloy) maintains the alignment of all pilasters, ensuring a sleek, uniform look.

The intermediate panels, or partitions, are fixed to the rear wall and mid-pilaster through aluminium U-channels, providing sturdy support. Each door is mounted on a mid/end pilaster with 3 hinges while maintaining a floor clearance of 150 mm.

This arrangement can be put up with ease in multiple places, like:

- Shopping malls / commercial complexes
- Hotels/restaurants
- Hospitals/clinics
- Stadium/sports clubs/gym
- Clubhouses
- Schools/collages/universities



Dimensions

Standard Dimensions	Regular (mm)	Specially Abled (mm)
Width of the cubicle	1000	1500
Depth of cubicle	1500	1700
Height of the divider	1200	1200
Height of the entire cubicle	1500	1500
Width of the door	600	900
Height of the door	1250	1250
Ground clearance	100	100

Special Features

Each lavatory cubicle is outfitted with the hardware shown below:

- Stainless steel coat hook and door stopper
- Allow privacy with a thumb turn and an indicator.
- Stainless steel U-channel.
- Stainless steel gravity hinges.
- Stainless steel shoe box up

Kiddiez pro

Introducing the Kiddiez Pro cubicle, the perfect solution for creating a safe and secure bathroom environment for children. This cubicle boasts various features, including EU-enclosed and CU-corner units, making it versatile and adaptable to any bathroom space. The Kiddiez Pro cubicle is built to last, with all pilasters supported by an L-bracket equipped with a floor anchor bolt. This ensures the cubicle remains stable and secure, even with frequent use. Furthermore, the anchor bolt is concealed with a stainless steel flat box-up of height 100mm, providing a sleek and professional finish.

The intermediate panels are fixed onto the wall with stainless steel U-channel and SS304 screw inserts, while the ground clearance of 100mm ensures easy access for children. Customers can choose from two stainless steel options—grades 304 and 316—to suit their needs. The Kiddiez Pro cubicle is the ultimate bathroom solution for childcare facilities, schools, and other public spaces. Its durable construction, versatile design, and professional finish will provide a safe and comfortable bathroom experience for children of all ages.

Dimensions

Standard Dimensions	Regular (mm)	Specially Abled (mm)
Width of the cubicle	1000	1500
Depth of cubicle	1500	1700
Height of the divider	1200	1200
Height of the entire cubicle	1500	1500
Width of the door	600	900

Special Features

Each lavatory cubicle is outfitted with the hardware shown below:

- Stainless steel coat hook and door stopper
- Allow privacy with a thumb turn and an indicator.
- Stainless steel U-channel.
- Stainless steel gravity hinges.
- Stainless steel shoe box up



Urinal Modesty Panels

We offer stylish and highly durable urinal modesty panels (UMP) in different colours and styles. The UMP is made with high-quality, compact-grade laminates. These laminates have a phenolic core comprising many layers of Kraft paper and phenolic resin. Because of this, our panels are durable and long lasting, making them an excellent choice for locations with a lot of foot activity. Our production method uses the most up-to-date gear available, based on a thermosetting resin reinforced with cellulose fibres. This results in a robust and reliable product that can survive even the most difficult circumstances. Our panels, which have a thickness of at least 12 millimetres, provide consumers with sufficient privacy.

Standard sizes of urinal partitions A. 450*900mm, B. 450mm*1200mm, and C. 550mm*1200mm.

The board's or panel's surface may be provided with anti-scratch and anti-fungal coatings, and urinal modesty panels may be purchased in different colours and finishes. Even in the most high-traffic areas, we guarantee that our panels will maintain cleanliness and hygiene standards. Using our urinal barriers, screens, and cubicles, you can provide your clients with the privacy they want without sacrificing a clean and contemporary appearance in your establishment. Urinal modesty panels give your public restroom the highest level of discretion while being long-lasting.



Types of urinal modesty panels

To maintain a sleek and modern look, we offer modesty panels in 5 different shapes (A, B, C, D, and E types) to accommodate all urinal configurations. Our panels are a practical addition to any restroom because they are made from durable materials and are easy to clean and maintain.

Hardware

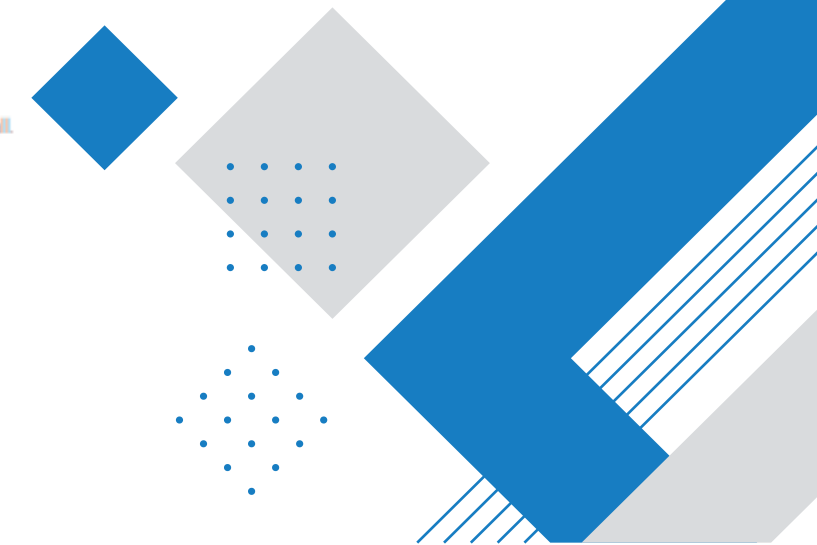
SS 304 or nylon PA-6 made brackets are used for fixing the UMP panels to the wall.



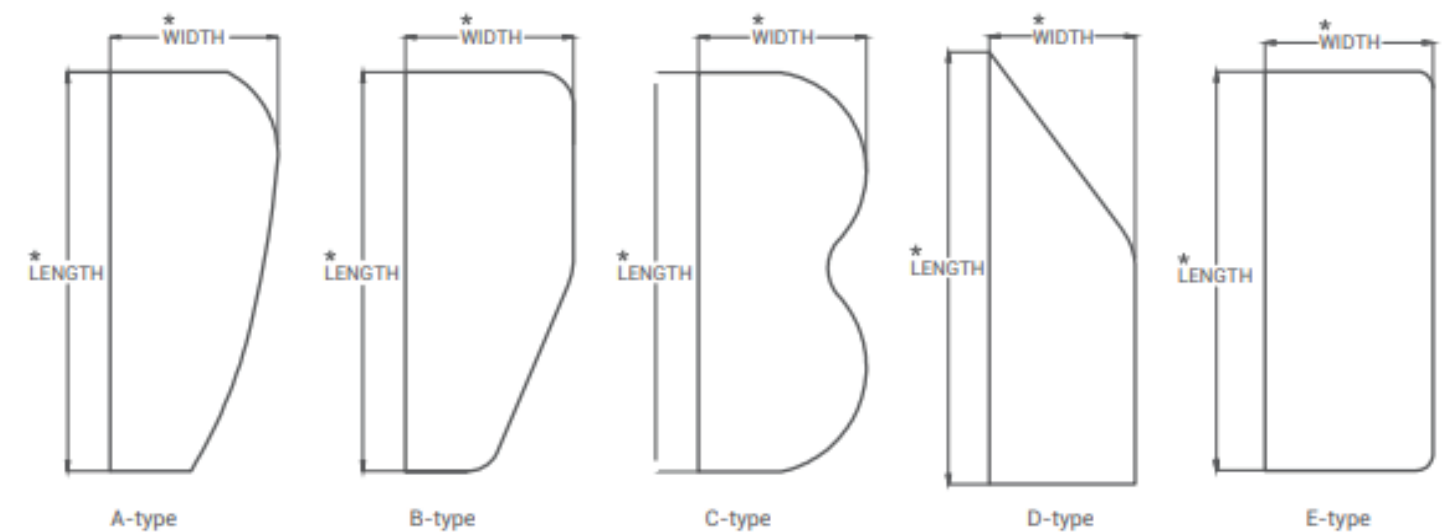
UMP RIGHT ANGLE
SS



UMP RIGHT ANGLE
NYLON



Different Shapes of UMP



Clients

Megha Systems is the top choice for many customers when it comes to selecting quality urinal cubicle products. Our clients, ranging from the government and private sectors, are delighted with our incomparable products that provide the perfect solution for public restrooms. Our partitions have unsurpassed durability and robustness to handle heavy foot traffic without deteriorating over time. We understand the importance of providing the highest quality products, ensuring we use the best materials with antibacterial coatings. This makes cleaning processes more effortless and effective, ensuring impressive levels of hygiene throughout our urinal cubicles.

We dedicate ourselves to ensuring that our customers are fully satisfied with our service. Not only do we provide superior quality merchandise, but we also offer the best customer service, whether it be helping clients select products or even providing installation and maintenance assistance. Our professionally trained experts are always at hand to answer any inquiries, ensuring that all our customers can find exactly what they need and count on us for help.

Here are a few of our satisfied customers at **Megha Systems:**



HCL



SPAZE
PARTNERS IN GROWTH

RPS



HONDA

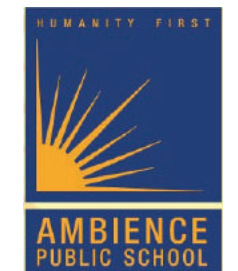


SIGNATURE GLOBAL
REALTY. RELIABILITY. RESPONSIBILITY.



YAMAHA

PACIFIC
NSP-PITAMPURA DELHI



ASHOKA UNIVERSITY

DAIKIN

